

# MarketOne

## 10 Selection Drink Vending Machine



This new can & bottle drink merchandiser offers 10 selections of your customers' favorite national brand canned and bottled beverages. The MarketOne 10 Selection Drink Vending Machine vends most beverage containers on the market including twelve ounce cans, twenty and twenty four ounce bottles, and even sixteen ounce bottled water. A bright eye catching back-lit graphic sign and lighted product display draws in the customers.

- **ENERGY STAR® Rated**
- **Americans With Disabilities Act Compliant (ADA)**
- **Double depth high capacity bottle & can system**
- **Quick in-field product conversion**
- **Electronic coin changer and bill acceptor**
- **MDB/DEX communication**
- **Bright "live" product display**
- **Eye-catching graphic display**
- **Engaging styling package**
- **Back lighted point of sale window option**
- **Environmentally friendly R-513a refrigeration system**
- **Electronic pricing**
- **Energy efficient LED lighting**
- **Full sales & accounting features**
- **Credit/Debit card reader ready**
- **Money back product delivery sensor equipped**
- **Built-in security & quality construction**



*Shown with optional silver door styling.*

From the WORLD'S LARGEST manufacturer of individually owned vending equipment.

 **Vending.com**

# MarketOne

## 10 Selection Drink Vending Machine



### Easy Loading Product Stacks

Double deep for high capacity. Built-in case support rack helps speed loading.

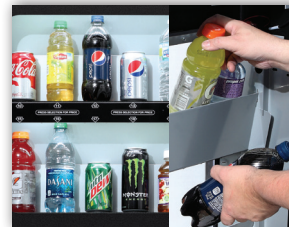


**Credit/Debit & mobile reader options.**



### Guaranteed Delivery Sensor System

Keeps customers satisfied and reduces service calls for misloaded product.



**Lighted Live Product Display** is easily accessible and allows quick product changes.



### Two-Line Display

With point of sale message and credit display options.



### Premium Currency Acceptors

Includes standard electronic coin acceptor and \$1, \$5, \$10 & \$20 bill acceptor (Set for \$1 & \$5)



### Large Braille Identified Keypad

## Features

- Vends up to 240 - 16.9, 20 or 24oz plastic bottles, 500 - 12oz cans or a mix of bottles and cans
- Large LED credit display
- Standard peripheral opening for additional payment or POS systems
- Large keypad with Braille identification
- Americans With Disabilities Act (ADA) Compliant
- ENERGY STAR® Rated
- MDB support for all industry standard devices including cash, coin, debit and credit systems
- DEX data output support
- Full featured controller with sales and accounting:
  - Electronic price setting by selection
  - Free vend and Combo vend modes
  - Flexible space to selection setting
  - Time of day discounting
  - Time of day shutdown modes for energy savings and secured vend times
  - Programmable coupon and token values
  - Coin and bill rejection rate counts
  - Accountability display by selection or machine
  - Talker device support for sight impaired
- Front access for moving equipment

MarketOne 10 Selection Drink Vending Machine						
<b>Selections</b>	10 Items					
<b>Capacity</b>	12 oz (355 ml) Can: 500 *20 oz. (591ml) Bottle: 240 *24 oz. (710 ml) Bottle: 240 *Capacities vary depending on packaging.					
<b>Selection Pricing</b>	Individual from \$0 to \$99.95					
<b>Payment Systems</b>	Premium Electronic Coin Acceptor; \$1, \$5, \$10 & \$20 Bill Acceptor (Set for \$1 & \$5) Optional Credit/Debit Card Reader					
<b>Electrical Requirements</b>	Domestic: 115 VAC/60Hz., 7.0 AMPS International: 230 VAC/50Hz 3.5 AMPS					
<b>Refrigeration</b>	1/3 Hp, R-513a Closed System					
<b>Dimensions</b>	Height	72" (183 cm)	Width	31.75" (80.7 cm)	Depth	36.5" (92.7 cm)
<b>Shipping Weight</b>	*671 lbs. (304.4 kg) *Varies with options.					
<b>Standard Features</b>	GVC2 Controller, Delivery Sensor System and Braille Keypad					
<b>Options</b>	Credit/Debit Card Reader, Backlit POS Display and Custom Graphics Wrap					

In order to bring you the best products possible, we continue to improve product design and performance and as such specifications are subject to change without notice. The manufacturer makes no warranties or representations of compliance with any local, state, national or international requirements for the operation of the equipment in any application for which it is capable of being used beyond approvals listed on the product. Any purchaser is required to make an independent analysis of the fitness and legality of the product's usage before it is deployed and must continue to monitor the potential changing nature of compliance requirements. The manufacturer expressly disclaims responsibility for compliance with any laws and affirmatively requires any buyer to make an independent analysis of the fitness and legal basis of any use or application of the subject unit.



## Energy Saving LED Lighting

Enhances product presentation promoting more sales. No bulb servicing for 5 years. Energy efficient and eco-friendly.



Tel. 1-800-548-1982

Fax. 515-274-5180

8040 University Blvd  
Des Moines, IA 50325